

North Central CBA

E-Central E-mail



Great Commandment Passion, Great Commission Focus

June 2008

Flooding in Iowa

All of you are aware of the recent flooding that has occurred in Iowa. Cedar Rapids was one of the areas that has been devastated by flooding. We have four churches in the Cedar Rapids area. None of the church buildings were affected by the flooding, however, at least sixteen families in these churches cannot say the same. At this time there are two families that have lost everything, including their homes.

As a family of churches we would like to be able to at least help these families financially. If you are led to do this, please send the funds to the Regional office with the memo marked "Flood Relief." Checks should be made out to NCCBA and mailed to: PO Box 568, Whitehall WI 54773.

It is also possible that there may be opportunities for churches to send groups to help with the clean up. However, at this time the water has not receded and buildings need to be assessed for structural integrity.

Please continue to pray for the people of Cedar Rapids and that God will use these churches to meet the challenges they will be facing in the days ahead. --Don Shaw, Regional Director

Henry C. Spicer Scholarship Recipients Announced

Each year graduating seniors from NCCBA churches are eligible to apply for scholarships provided from the Henry C. Spicer Scholarship Fund. Applications are reviewed by a committee against the criteria stated on the application. While scholastic

In This Issue

Good News--Bad News
PASTOR CARE: Are you at Risk?
YOUTH: Parent Poll
Chaplaincy Needed?
Scanner for Free
Quick Links
Upcoming Events

accomplishments are important, the students are also evaluated for other activities in which they are involved at school and church. Career goals, the educational institution involved and the benefit to the applicant are also given strong consideration.

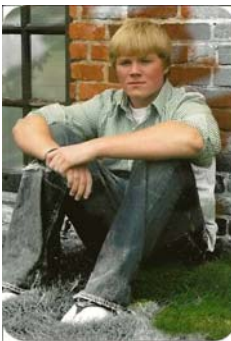
Applications were submitted this year by 11 highly qualified students. Because each of these students met and exceeded the stated criteria, the committee decided to recognize the accomplishments of as many students as possible. While this means a smaller monetary award, it is hoped that all of the applicants will be encouraged because of the demonstrated excellence with which they have honored God.

Therefore, with the funds available, four scholarships in the amount of \$500 have been awarded to:



Julie Ann Dietz from Storden Baptist Church in Storden, Minnesota, will be attending South Dakota State University, majoring in nursing.

David Giese from Faith Baptist Church in Park Rapids, Minnesota, plans to attend Moody Bible Institute, studying Pastoral Studies Pre-Seminary/Theology.



Kyle Douglas Klein from Colonial Hills Baptist Church in Mt. Morris, Michigan, has been accepted at Liberty University and will study Journalism/Political Science.

Contact Our Office

Valuable Information for Your Church Growth

Customized demographic information now available about your church location. This is a **free** service for all NCCBA churches. Call Don at 715-538-2298 or visit

www.Link2Lead.com

Natural Church Development

This is a proven tool that can help your church with growth, not just in terms of quality but in terms of evangelism.

NCB will help you identify the eight qualities and six growth factors for a healthy church.

Healthy NCD is seeing a steady growth through conversions and the ongoing discipleship of those who are part of the church.

Give us a call at 715-538-2298. Significant improvements have been made in how to interpret and implement findings.

Ministry Quick Links

[CBAmerica](#)
[Link2Lead](#)
[\(demographic info\)](#)
[Illinois State Youth Fellowship](#)
[Worship Summit in Iowa](#)

Microsoft Software and More

Microsoft Office Pro Plus 2007 is \$122 plus \$35 for

Bethany Morris from First Baptist Church in New Richmond, Wisconsin, will attend Northwestern College, with an emphasis in Music Education.



We congratulate these students and pray for all the applicants as they take the next steps in their walk of faith as they begin college this fall.

Art Cotant, Scholarship Committee Chair

Good News--Bad News

I have just begun to read **The American Church in Crisis** by David T. Olson. The book is filled with all sorts of statistics which I am in the midst of wading through. However at this point I have read enough to realize, as the titles suggests, the church in America is not in good shape.

For example, in 1990 the percentage of population that attended church on any given weekend was 20.4%. In 2005 the number was 17.5%. As for Evangelicals in 1990 the number was 9.2% and in 2005 the number was 9.1%. All of the indicators point to the fact nothing has changed and that the trends are downward.

What is also important to take into account is the information presented in the book **unChristian**. It looks at the 16 to 29 age group. The church/Christianity does not fare well within this age group. So at this point we have a great challenge. It becomes an even greater challenge when we realize what often happens with churches that are seeking to truly make an impact for God's kingdom. Let me give you three examples of good news and three of bad news. Since I do not like to end on the negative I'm going to start with the bad news.

- Unchurched children were becoming involved with Sunday School and proving to be disruptive. A former leader indicated that these were not the right kind of people you needed to build a church.

the installation media. Other Microsoft products, Adobe and hardware are also available. Call Jean at the office, 715-538-2298, for price quotes and to order.

NCCBA

www.nccba-gc2.com

WEBSITE

**CHILD ABUSE
REPORTING
LAWS for your State on
our [website](#) under
"Resources"**

- The leader of worship under the pastor's direction moved special music from after the offering to during the offering. A meeting that should have taken a few minutes lasted over an hour.
- A plaque was placed in the entry of a church. The verse chosen referred to treasure. The pastor thought that any unchurched person might think that this church was only interested in money. When the plaque was removed conflict erupted.

Now let's consider some good news. I recently meet with Mark Jobe and Ritch Boerckel. Mark is the senior pastor at New Life in Chicago and Ritch is at Bethany Baptist in Peoria. Both are involved in either replanting or planting new churches.

- New Life has been involved replanting ten churches in the Chicago area. Their accumulated average attendance is 3500 to 4000. However, much of their growth is because people are coming to Christ.
- Bethany launched a daughter church four years ago. In September they will be launching a second. The first church has recently hired new staff and is in the process of building. The second church will launch with close to 300.
- Grace Community in Osage, MN has launched a new church that is ministering to American Indians. They have also been given the property from a church that died. It is their desire to do a restart in the next year. What you need to know is that three years ago Grace Community (FBC, Osage) was ready to close.

The key difference between the good news and the bad news has to do with focus. Those involved with good news have their eyes and their hearts reaching the lost and making disciples. The more we center on that rather than on me and mine, the better we will be able to meet the challenge.

Don Shaw, Regional Director
donnccba@trivest.net

PASTOR CARE:

Are You At Risk? (How much are you at risk?)

Several months ago a rather sad and yet compelling story flashed across the local T.V. news reports. A man had driven past warning signs and barriers, off the end of the road where a bridge had been removed and landed on top of vehicles on the highway below.

Almost everyone opened their remarks about the incident by asking how such a thing could happen. Didn't he see the signs? Didn't he believe them? When pastors are caught up in marital infidelity, we often ask the same questions.

Marital and sexual infidelity among pastors is a constant and increasingly alarming issue. I suspect that most of us would rather not hear or read about it anymore. It seems as though we hear about another instance every month. I have written about it several times recently, so I hesitate to do so again. However, an article in a recent American Association of Christian Counselors contains information that I believe each pastor should be aware and consider carefully. The most risk-filled thing that any of us can do is assume that we are not at risk.

Accepting that all of us are vulnerable, what are some factors that increase our risk of falling into unfaithfulness to our marriage partners and vows. Rev. David Carder, M.A., has written a short article entitled "High Risk Factors in Pastoral Infidelity" in which he correlates the results of 6 surveys taken between 1987 and 1998. Rev. Carder groups his discoveries into four major categories: 1. High Risk Family History; 2. High Risk Personal Factors; 3. High Risk Seasons of Life; 4. High Risk Personal Behavior. Some of the items he lists under each category are the "usual" ones. Some of them are quite different.

What family of origin (the one you grew up in) factors increase our risk of infidelity? Three came to light in the surveys considered: Family history of infidelity, Single parent/blended family history, and Physically abusive/chronically conflicted family history. How about the personal factors? The survey results surfaced three: Sexual molestation, Adolescent promiscuity, and Learning disabilities/ADHD.

The seasons of life results were: Time of loss, and Times of life transitions. The personal behavior factors are: Opposite sex (I prefer the term gender) friendships, and Conjoint volunteer opportunities.

None of these factors, in and of themselves, prove or predict any certain thing about an individual person. They do give us some significant signposts that send important cautions and warnings for us. I encourage each of us to take an honest look at our own past and present situations in order to "read the signs" and take heed. Rev. Carder states this. "For you as an individual, the phrase (high risk factors) does mean that the more of these behaviors and life experiences you find in your own history, the more attention you need to give to your own protection and healing."

Rev. Carden makes several other significant observations. Concerning family of origin history, he points out that the factors listed all might contribute to disturbances in the attachments that we make as children, leading to inappropriate relationships as adults. In the area of personal history factors, he suggests that sexual molestation (especially by an older female) often generates adolescent promiscuity. And disabilities (often accompanied by being picked on, disliked, and poor impulse control) sometimes lead to adult needs for nurturance and little sense of delayed gratification, and thus to inappropriate relationships.

Seasons of life issues revealed that the single greatest risk factor seems to be the two years surrounding the birth and infancy of a child, with lots of contributing sub-points. Personal behavior reveals that, next to pregnancy, "conjoint volunteer opportunities provide the greatest arena for pastoral adultery." This may be true because both people have a passion for a ministry not shared by their spouses.

Two surprises came to light. One is that the younger a pastor was when converted, the more likely he will commit adultery in ministry. The second is that the more education a pastor had, the more likely he was to commit adultery.

I want to challenge you to take a careful, honest look at yourself, your history and your current behavior in the month ahead. Honesty is vitally important. On the surveys reviewed, 14% acknowledged in the last question that they had lied on the survey. Deceiving others or ourselves does not reduce the danger, it increases it exponentially.

If the risks have already produced wrong behavior, get some help from a trusted and competent source. If the observations made here increase your concern, begin now to work with someone to mitigate the risks before they lead you to drive off the bridge that is not there.

Nick Bell, LMFT, Interim Pastor, Streator IL

Working with Youth:

A recent nation-wide poll by HomeWord asked Christian parents what they feel are the most important and most challenging parenting issues they face. We, as youthworkers, should be very

interested in the results:

Q: What do you consider to be the most important parenting issue that you face today?

A: 27% of parents surveyed responded that they consider passing on their faith to their kids as the most important issue. Equipping kids to make wise decisions about love, sex and dating was the second highest rated issue at 10.8%. Communication ranked a close third at 9.5%.

Q: Of the parenting issues listed, which do you find to be the most challenging to handle on a day-to-day basis?

A: Discipline was the top ranked issue with 21.9% of respondents feeling this was the most challenging day-to-day parenting issue that they face. Peer-influence issues were rated second at 12.3%. Two issues, understanding/dealing with adolescent development, and passing faith along to kids tied for third at 9.6%.

Q: Of the parenting issues listed, which do you feel you are handling best on a day-to-day basis?

A: Two issues, spending adequate time with kids, and passing on faith to kids tied for the top ranking in this area at 21.9% each. Communication ranked third at 16.4%, followed by setting specific parenting goals for raising kids to become adults at 9.6%.

Q: When you feel you need help with a parenting issue, where to you first look in order to find answers?

A: When asked who parents look for first in order to find answers on parenting issues, close friends received the highest ranking at 37%. Books, other printed or audio resources placed second at 15.1%. Parents placed third at 9.6%.

The thread that weaves its way down through the answers given here, and parenting in general, is highlighted in Deuteronomy 6:1-9. We, as parents and youthworkers, need to be so in love with God, that we are constantly sharing Him & His Word with our kids and those we work with. We are commanded to repeat His commands again and again and again and-- (got the point yet?). When we're at home, at youth group, away on a youth trip, trying to get them settled down at night at camp or when we're spending one-on-one time with them, our priority is to continually be pointing them toward God. How are you doing in this area? How are you really doing?

Nate Schroder, Discovery Church, St. Cloud, MN

Is A Chaplaincy Ministry Needed?

Are chaplains necessary in the war on terror? Here is a quote from Mike Mullen, Admiral, United States Navy, Chairman of the Joint Chiefs of Staff:

"We couldn't defend this nation without our Chaplains, Chaplain Assistants/Religious Program Specialists. The compassionate care you provide our fighting men and women - and their families - remains vital to our combat readiness.

You are the ear we want to bend, the helping hand we want to grasp, the broad shoulder upon which we want to lean. You serve us and our spiritual needs every bit as much as you serve the national security needs of this great country.

Thank you for that service, and for the courage - physical and moral - you demonstrate every day at sea, on the ground and in the air. On behalf of all those with whom and for whom you tread in harm's way, I salute you."

At present CBAmerica has seven chaplains serving in Iraq. The senior chaplain who oversees the 400 plus chaplains there is Richard Garrison (CBA). The senior chaplain over all the medical hospitals in Iraq is Mark Mitera (CBA). The senior chaplain over security at the Baghdad airport is Mark Campbell (CBA). Four other chaplains Tim Crawley, Ivan Arreguin, Eric Lambert and Shane Vande Vrede serve units in Iraq. Before the summer is over another four will join them there.

Pray for the families at home. Pray for the ministry of the chaplains as they hold Bible studies, worship services and counsel many, many soldiers.

Pray for Harry Rauch (CBA), the senior chaplain overseeing the funerals at Arlington Cemetery. They conduct some 35 plus funerals a day. Harry is the chaplain in charge of this ministry. Pray for Dave Lundell, a chaplain in the Veterans Medical Center in San Diego who specializes in PTSD (Post Traumatic Stress Disorder) as he works with those returning from Iraq and trains other chaplains in this field.

These are just a few of the 225 chaplains representing CBAmerica chaplaincy. This week I am processing another five applications for those interested in one of the many chaplaincy ministries.

For more information on CBAmerica Chaplaincy contact Al Russell at 218-776-2813 or at chapruss@earthlink.net. We would love to share in your church service or missions conference what God is doing in chaplaincy.

Susek coming to Chicago and Minneapolis areas

On October 28 and 30, Ron Susek will be talking to leaders of NCCBA churches about church conflict. He has written the book **Firestorm: Preventing and Overcoming Church Conflict**.

To register for this seminar, visit our [website](#).

SCANNER---for Windows XP (or earlier OS)

If your church would like a scanner for the price of shipping, please call Jean at the NCCBA office, 715-538-2298.

Upcoming Events

National Leadership Summit July 23-25 [Register at CBAmerica's website](#)
Ft. Collins, CO

Firestorm Seminars with Ron Susek Oct. 28 & 30 [Register online](#)
Glen Ellyn IL and Edina MN

NCCBA Churches in Need of a Pastor

Please pray for the following churches and Search Committees:

- First Baptist Church--Whitehall, WI YOUTH PASTOR
- Rockford Baptist Church--Rockford MI YOUTH PASTOR
- First Baptist Church--Lansing IL
- First Baptist Church--Streator IL
- First Baptist Church--Sibley IA
- Artichoke Lake Baptist Church--Correll MN
- Faith Fellowship Church--Cincinnati OH

Contact Our Office

North Central CBA - Jean Wright - 715-538-2298 - nccba@trivest.net

North Central Conservative Baptist Association | P.O. Box 568 | Whitehall | WI | 54773